



**TORNADO OPEN MIXED & YOUTH
WORLD CHAMPIONSHIPS 2025
NAUTICAL CLUB KALAMARIA
18-25 JULY
THESSALONIKI GREECE**



NOTICE OF RACE (NOR)

The Organising Authority is the
Nautical Club of Kalamaria (NAOKTh)
on behalf of the International Tornado Association,
under the authority of Hellenic Sailing Federation, and the
World Sailing.

The notation '[NP]' in a rule means that a boat may not protest another boat for breaking that rule. This changes RRS 60.1(a).

The notation '[SP]' in a rule means that a that a "standard penalty" as defined in RRS 60.5 may be imposed by the Race Committee or the Technical Committee without a hearing. This changes RRS 63.1 and A5

1 RULES

1.1 The event will be governed by the rules as defined in *The Racing Rules of Sailing (RRS 2025 - 2028)*. Other documents under definition Rule (g) include:

1. The Equipment Rules of Sailing (ERS 2025-2028), available at <https://www.sailing.org/inside-world-sailing/rules-regulations/equipment-rules-of-sailing/>.
2. [SP] The ITA class rules and the Equipment Inspection Regulations, available at <https://www.tornado-class.org/class-rules/> .
3. [DP] The Support Team Regulations (STR), including support vessels.

1.2 No National Authority prescriptions apply.

1.3 RRS 90.3(e) applies.

1.4 If there is a conflict between languages the English text takes precedence.

2 SAILING INSTRUCTIONS

The sailing instructions will be available on the official notice board from 18 July 2025.

3 **COMMUNICATION**

3.1 The online official notice board is located at <https://www.racingrulesofsailing.org/documents/10221/event>

3.2 [DP] All support person vessels shall carry a VHF radio capable of communicating on 69 or 72.

On the water, the Race Committee will make courtesy broadcasts on VHF radio.

3.3 [DP] While racing, except in an emergency, a boat shall not make voice or data transmissions and shall not receive voice or data communication that is not available to all boats.

4 **ELIGIBILITY AND ENTRY**

4.1 The event is open to all boats of the International Tornado Class, including both New Rig Tornado and Classic Rig Tornado configurations.

4.2 On 1 March 2022, World Sailing published the following recommendations in reaction to the situation in Ukraine: <https://www.sailing.org/2022/03/01/world-sailing-statement-6/>. To help preserve the integrity and safety of the Tornado World Championship 2025, entries shall be open to competitors of all nationalities, but not to competitors holding only Russian or Belarussian nationality. The Organizing Authority may amend this rule following any further World Sailing decisions on the situation with Russia and Belarus.

4.3 Competitors shall comply with WS Regulation 19 - Eligibility Code. Each competitor shall be registered as a World Sailing sailor on the <https://www.sailing.org/sailors/world-sailing-profile/>.

4.4 Competitors under 18 years of age shall provide a signed and completed parent (or guardian) consent and declaration form. The forms are available for download on <https://www.racingrulesofsailing.org/documents/10221/event>

4.5 Only current, fully paid members of the International Tornado Association may enter the event.

4.6 Eligible boats shall have valid Measurement Certificates that comply Class Rules

4.7 [NP] According to RRS 75.a, each competitor shall be a member of a club or other organization affiliated to a World Sailing member national authority, with the exception that all Greek competitors shall have a valid sports ID issued by the Hellenic Sailing Federation. Each competitor shall present proof of his/her nationality when requested.

4.8 Eligible boats may enter by completing the entry form: <https://docs.google.com/forms/d/e/1FAIpQLSegnK4Al5Bp2zfhAax-zxVdXRJeT9nosMUP93EuxnghNKUv7g/viewform?usp=header> The entry must be accompanied by proof of entry fee payment, submitted to tornadoworlds2025@gmail.com. **Email subject: Sail Number and Name of Helm.**

4.9 To be considered an entry in the event, a boat shall complete all registration requirements and pay all fees.

4.10 Entries after 17/07/2025 will be accepted at the sole discretion of the Organizing Authority.

4.11 The Organizing Authority may cancel or postpone an event in case of very serious reasons (COVID restrictions, travel restrictions imposed, etc.). Competitors will be notified of cancelled events by email and posting on the event website. The entry fees for cancelled events will be refunded.

5 FEES

5.1 Entry fees are as follows:

	Early Entry Fee until 18/4/2025	Standard Fee until 19/4-15/6/2025	Late Entry fee 16/6- 17/7/2025
Boat	450 €	500€	550€
Support Persons			150€

5.2 The Entry fee includes the following:

- International Tornado Association fee of 50 Euros
- Hauling in and hauling out.
- The berthing fee from 14/7/25 to 28/7/25. In case of a longer berthing time, requires a previous agreement with the Organizing Authority.
- Daily post-race refreshments (snacks and drinks).
- Exclusive access to the Gala Dinner.

5.3 All entry fees shall be paid by bank transfer at the following bank account, naming the event, the name of the helmsman, and the sail number or the name of the support person:

Bank: ALPHA BANK
 Beneficiary: ΝΑΥΤΙΚΟΣ ΑΘΛΗΤΙΚΟΣ ΟΜΙΛΟΣ ΚΑΛΑΜΑΡΙΑΣ ΘΕΣΣΑΛΟΝΙΚΗΣ
 (NAUTICAL ATHLETIC CLUB KALAMARIA'S THESSALONIKI)
 IBAN: GR6701407060706002002022313
 BIC/SWIFT: CRBAGRA

5.4 Cancellation:

In the case of a team withdrawing from the Championship, the paid entry fee will be refunded as follows:

- Up to 15/6 2025: 75% of the entry fees will be refunded.
- After 16/6/2025: No refund will be made.

6 [DP] ADVERTISING

6.1 Boats may be required to display advertising chosen and supplied by the Organizing Authority.

- 6.2** The Organizing Authority may provide coloured discs or bibs that the event leaders (1st, 2nd & 3rd) are required to display on the mainsail, or wear.

7 SCHEDULE

- 7.1** The schedule will be as follows:

Date	Time	Activity
18 th July	10:00 - 14:00 16:00 - 20:00	Registration & Equipment Inspection
19 th July	10:00-14:00 16:00 19:00 20:00	Registration & Equipment Inspection Practice Race Coaches / Competitors Meeting Opening Ceremony
20 th July	13:00	Opening Series
21 st July	TBA TBA	Coaches / Competitors Meeting Opening Series
22 nd July	TBA TBA	Coaches / Competitors Meeting Opening Series
23 rd July	TBA	Reserve Day
24 th July	TBA TBA	Coaches / Competitors Meeting Opening Series
25 th July	TBA TBA TBA	Coaches / Competitors Meeting Opening Series Prize Giving Ceremony

- 7.2** Ten (10) Opening Series races are scheduled.
- 7.3** The maximum number of races sailed per day will be two (2), unless in order to complete the required minimum number of races to constitute a series. Races may be scheduled on the Reserve Day, according to the decision of the Race Committee.
- 7.4** On the last scheduled day of racing no warning signal will be made after 17:00, except there is a general recall
- 8 [DP] EQUIPMENT INSPECTION**
- 8.1** This regatta is an international event for the purposes of RRS G1.1.
- 8.2** A Technical Committee shall be appointed in accordance with RRS 92.
- 8.3** [DP] Boats shall be available for equipment inspection from the date and time specified in NoR 7.1.
- 8.4** Each boat shall produce or verify the existence of a valid measurement certificate.

8.5 [DP] [NP] Equipment Inspection shall be conducted in accordance with the Tornado Equipment Inspection Regulations. Each boat shall provide a knife and a whistle attached at the PFD

8.6 Measurement and equipment checks may be made throughout the event at the discretion of the Technical Committee, Race Committee, or the International Jury.

8.7 [DP] RRS 78.1 is changed so that competitors are responsible for ensuring that their boat is maintained in accordance with the Class Rules and that the measurement certificate, where applicable, remains valid.

8.8 [DP] Each boat is required to comply with RRS 78.1 and the Equipment Inspection Regulations from the time of its pre-race equipment inspection onwards unless otherwise approved by the Technical Committee. Non-compliance may be protested and penalised as if it were discovered after racing.

9 **VENUE**

9.1 The venue is the Nautical Club of Kalamaria Thessaloniki. This is the location of the venue: <https://maps.app.goo.gl/zccfjuQkzHXCReHE7>

9.2 NoR Addendum A shows the location of the racing area. The racing area will be near the Nautical Club of Kalamaria

10 **COURSES**

The courses will be Windward/Leeward with a spreader mark at the windward leg and a gate at the leeward leg of the course. More details will be included in the Sailing Instructions

11 **PENALTY SYSTEM**

11.1 RRS 44.1 is changed so that the Two-Turns Penalty is replaced by the One-Turn Penalty.

11.2 RRS 44.3 will not apply

11.3 RRS Appendix P, Special Procedures for Rule 42 applies.

RRS P2 is deleted and replaced by: "P2. When a boat is penalised under rule P1.2, her penalty shall be a One-Turn Penalty under rule 44.2. If she fails to take it, she shall be disqualified without a hearing."

11.4 An International Jury will be appointed in accordance with rule 91(b).

11.5 Penalties for breaches of class rules, RRS 50 and 78, or rules in the NoR/SI marked [DP] or [SP], should the case go to a hearing, are at the discretion of the International Jury.

11.6 For breaches of NoR/SI marked [SP] and breaches of the Class Rules, the Race Committee or Technical Committee may apply a standard penalty without a hearing to the race(s) closest in time to the incident. The scores of other boats shall not be changed. However, the Race Committee or Technical Committee may protest a boat when they consider the standard penalty to be inappropriate. A boat that has been penalised with a standard penalty can neither be protested for the same incident by

another boat nor can another boat request redress for this Race Committee action. This changes RRS 60.1, 63.1 and Appendix A5.

12 SCORING

12.1 Four (4) races are required to be completed to constitute a series.

- 12.2**
1. When fewer than five (5) races have been completed, a boat's series score will be the total of her race scores.
 2. When five (5) or more races have been completed, a boat's series score will be the total of her race scores excluding her worst score.

12.3 There will be a final official ranking list for:

- the Open Tornado World Championship,
- the Mixed Tornado World Championship,
- the Youth Tornado World Championship, and
- the Classic Global Tornado Cup.

Mixed and Youth Championship rankings will be based on the Open Tornado Championship results without recalculation.

13 [DP] SUPPORT PERSONS and SUPPORT PERSON VESSELS

13.1 All support person vessels and designated drivers shall be registered with the Organizing Authority and will be required to comply with local legislation and the Support Team Regulations (STR), by completing the registration form, posted on <https://forms.gle/2ZXxvycq6NYftWaa9> no later than 15/6/25 and pay the corresponding entry fees as stated in NoR 5.1. The Organizing Authority may refuse or accept late registrations at their sole discretion.

13.2 Support persons shall confirm the registration of their vessels and submit the names and sail numbers of the competitors they are supporting at the Race Office before the end of the registration.

13.3 A support vessel includes any vessel that is under the control or direction of a support person as defined in the RRS and also includes any person gathering data that may be used by a team or competitor.

13.4 [DP] Support person vessels shall be marked with a flag with their three-letter national code clearly displayed, or with a sticker of their three-letter national code on each side of the boat or engine. The minimum height for the letters shall be 200 mm. The flag or stickers will be provided by the Organizing Authority (a deposit of 10€ is required).

13.5 Each support person vessel at the event shall be insured with valid third-party liability insurance with a minimum cover of 1.500.000 € (or the equivalent) per incident and valid for the event.

14 CHARTERED OR LOANED BOATS

A chartered or loaned boat may carry national letters or a sail number in contravention of her class rules, provided that the race committee has approved her sail identification before the first race. (RRS Appendix G.3)

15 [NP] [DP] BERTHING

- 15.1** [SP] Unless otherwise instructed, boats shall be kept in their assigned places while in the boat park.
- 15.2** Trailers should be parked in the designated areas.

16 [NP][DP] MEDIA RIGHTS, CAMERAS AND ELECTRONIC EQUIPMENT

- 16.1** By participating in the event, competitors, registered support persons, or other persons legally bound to this Notice of Race, automatically grant to the International Tornado Association and the Organizing Authority and their sponsors, the right in perpetuity to make, use, and show, from time to time at their discretion, any motion pictures and live, taped or filmed television and other reproductions of the athlete during the period of the competition without compensation.
- 16.2** Competitors may be required for interviews during the event.
- 16.3** Boats may be required to carry cameras, sound equipment, or positioning equipment as specified by the Organizing Authority.

17 DATA PROTECTION

The Organizing Authority will process, and store personal data collected from competitors and registered support persons or another person legally bound to this Notice of Race in connection with the event. Protection of personal data shall be arranged in compliance with the local legislation or, where applicable, in compliance with the EU GDPR Regulation.

18 RISK STATEMENT

- 18.1** Competitors participate in the event entirely at their own risk and they are reminded of the provisions of RRS 3, Decision to Race. The responsibility for the decision to participate in a race or to continue with it is solely with the Person in Charge (as defined in RRS 46); to that extent, the Person in Charge also accepts full responsibility for the crew. The Person in Charge is responsible for the qualification and the correct nautical conduct of the crew as well as for the suitability and seaworthiness of the registered boat.
- 18.2** The responsibility for the decision to provide support to a competitor or to continue with it is solely with the registered support person; to that extent, the registered support person also accepts full responsibility for the crew on the support person vessel. The person in charge of the support person vessel is responsible for the qualification and the correct nautical conduct of the crew as well as for the suitability and the seaworthiness of the registered support person vessel.
- 18.3** Sailing is by its nature an unpredictable sport and therefore involves an element of risk. By taking part in the event, each competitor agrees and acknowledges that:
1. They are aware of the inherent element of risk involved in the sport and accept responsibility for the exposure of themselves, their crew and their boat to such inherent risk whilst taking part in the event.

2. They are responsible for the safety of themselves, their crew, their boat, and their other property whether afloat or ashore.
3. They accept responsibility for any injury, damage, or loss to the extent caused by their own actions or omissions.
4. By participating in any race, they are satisfied that their boat is in good order, equipped to sail in the event and they are fit to participate.
5. The provision of a race management team, safety boats, judges and other officials and volunteers by the organizer does not relieve them of their own responsibilities.
6. The provision of safety boat cover is limited to such assistance, particularly in extreme weather conditions, as can be practically provided in the circumstances.
7. They will familiarize themselves with any venue/event specific risks, adhere to rules and information produced for the venue/event and they will attend any venue/event safety briefings.
8. The Organizing Authority and all persons involved in the regatta organization will not accept any liability for material damage or personal injury or death sustained in conjunction with or prior to, during, or after the regatta.

19 **INSURANCE**

Each participating boat shall be insured with valid third-party liability insurance with a minimum cover of 1.500.000 € per incident or the equivalent. The organizing authority is not responsible for verifying the status or validity of the insurance certificates. However, the organizing authority reserves the right to verify the status or validity of insurance certificates to ensure protection for all persons involved in the event.

20 **PRIZES**

Prizes will be given as follows:

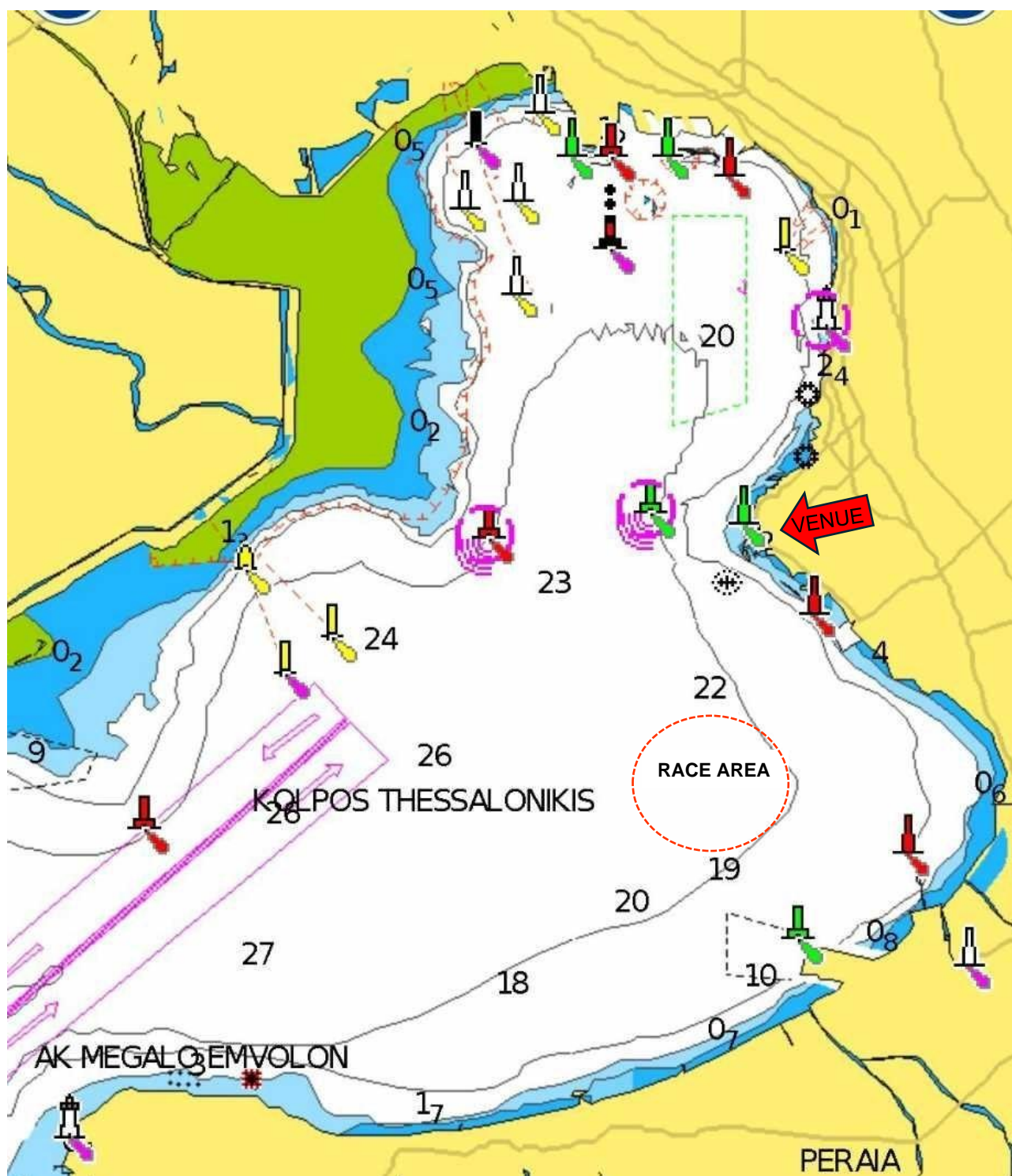
- Tornado Open: to the first 5 classified boats;
- Tornado Mixed: to the first 3 classified boats;
- Tornado Youth (each crew member under 26 years old on December 31st, 2025): to the first 3 classified boats;
- Tornado Classic Cup: to the first 3 classified boats;

In case of less than 3 participants, the prize will be awarded only to the 1st winner.

21 **FURTHER INFORMATION**

- For further information please contact the Club Secretary +30 2310 454111 or per e-mail: tornadoworlds2025@gmail.com

ADDENDUM A RACE AREA



ADDENDUM B

SUPPORT VESSEL REGULATIONS

Support Vessels shall carry the following Equipment on board:

- Life jackets / buoyance aids for the driver and all passengers,
- Engine kill cord (also known as a safety lanyard or automatic engine immobilizer) with a spare kill cord on the support vessel
- VHF radio capable of receiving instruction from Safety or Race Committee on channels 16-69-72
- First-aid kit
- Device for making a sound signal
- Compass
- Adequate anchor and tackle for conditions and depth
- Tow rope (minimum 15m long and 10mm thick)
- Knife

Support Vessel Regulations

- Support Vessels shall be registered with the Organizing Authority and shall be marked with their applicable national sail letters clearly displayed, the minimum height for these letters is 200mm.
- Support Vessels shall comply with all local regulations.
- Support Vessels shall follow Race Committee instructions on the designated VHF channel. 69 or 72
- Kill cords shall be worn at all times when the engine is running.
- Life jackets / buoyance aids - it is recommended that they always worn when afloat and shall be worn in winds of over 10 knots or when motoring at more than 10 knots.
- Support vessels shall not be positioned, except during rescue operations:
 - Support vessels shall refrain from motoring at more than 5 knots after the warning signal until the last boat has finished. In winds less than 10 knots, coach boats exceeding 5 knots shall remain at least at 100 meters from any boat that is racing, or in winds above 10 knots they shall remain at least at 150 meters from any boat that is racing.
 - Within 100 meters to leeward of the starting line and its extensions from the warning signal until all boats have left the starting area. or the race committee signals a postponement, general recall or abandonment.
 - Within 100 meters of any mark of the course while boats are in the vicinity of that mark.
 - Within 100 meters of the finishing line while boats are finishing.