



TORNADO OPEN MIXED & YOUTH WORLD CHAMPIONSHIPS 2025 NAUTICAL CLUB KALAMARIA 18-25 JULY THESSALONIKI GREECE



SAILING INSTRUCTIONS

The notation “[NP]” in a rule in the Sailing Instructions (“SI”) means that a breach of that rule shall not be grounds for protest by a boat. This changes RRS 60.1.(a)

The notation “[DP]” in a rule in the SI means that a breach of that rule may, at the discretion of the protest committee, be less than disqualification.

The notation “[SP]” in a rule in the SI means that a breach of that rule denotes a rule may, at the discretion of the race committee, be a standard penalty without a hearing or, a discretionary penalty applied by the International Jury with a hearing.

1 RULES

1.1 The event is governed by the rules as defined in The Racing Rules of Sailing (RRS) and the rules as listed in NoR 1 - RULES.

1.2 If there is a conflict between a rule in the Notice of Race (NoR) and these Sailing Instructions (SIs), the Sailing Instructions shall take precedence. This changes RRS 63.5(c).

1.3 Appendix T - Arbitration will apply.

2 CHANGES TO SAILING INSTRUCTIONS

2.1 Any change to the Sailing Instructions will be posted no later than 120 minutes before the scheduled warning signal of the race affected by the change(s), except that any change to the schedule of races will be posted by 20:00 on the day before it takes effect.



2.2 Any changes to the Sailing Instructions and the schedule of races shall be subject to approval by the International Tornado Association (ITA) representative.

3 COMMUNICATIONS WITH COMPETITORS

3.1 Notices to competitors will be posted on the official notice board located at <https://www.racingrulesofsailing.org/documents/10221/event>

3.2 A *WhatsApp* group will be used by the Organizing Authority to communicate complementary information. The information posted on that group is not official. The link to join the group will be posted on the Official Notice Board and in the race office.

3.3 The race office is located at the secretariat offices of the Nautical Club of Kalamaria

3.4 On the water, the race committee intends to monitor and communicate with support persons on VHF radio channel 72.

4 [DP] CODE OF CONDUCT

4.1 [NP] Competitors and support persons shall comply with reasonable requests from a regatta official.

4.2 Competitors and support persons shall handle any equipment or place advertising provided by the Organizing Authority with care, seamanship, in accordance with any instructions for its use and without interfering with its functionality.

4.3 [SP] Boats not racing shall avoid the area where boats are racing and stay clear of any official vessel.

5 SIGNALS MADE ASHORE

5.1 Signals made ashore will be displayed at will be displayed from the official flagpole located in front of the clubhouse.

5.2 When flag AP is displayed ashore, '1 minute' is replaced with 'not less than 45 minutes' in Race Signals AP. This changes Race Signals.

5.3 [SP] [NP] Flag D with one sound means 'Boats shall not leave their assigned places until this signal is made. The warning signal will not be made before the scheduled time or less than 45 minutes after flag D is displayed.'

6 SCHEDULE

6.1 Dates of racing:

Date	Time	Activity
18 th July	10:00 - 14:00 16:00 - 20:00	Registration & Equipment Inspection
19 th July	10:00-14:00 16:00 19:00 20:00	Registration & Equipment Inspection Practice Race Coaches / Competitors Meeting Opening Ceremony
20 th July	13:00	Opening Series
21 st July	TBA TBA	Coaches / Competitors Meeting Opening Series
22 nd July	TBA TBA	Coaches / Competitors Meeting Opening Series
23 rd July	TBA	Reserve Day
24 th July	TBA TBA	Coaches / Competitors Meeting Opening Series
25 th July	TBA TBA TBA	Coaches / Competitors Meeting Opening Series Prize Giving Ceremony

6.2 Ten (10) Opening Series races are scheduled.

On the last scheduled day of racing no warning signal will be made after 17:00, except if a general recall signal was signaled.

6.3 The maximum number of races sailed per day will be two (2). However, one (1) or more extra races per day may be scheduled, in order to complete the required minimum number of races (4) to constitute a series.

6.4 The Reserve Day may be used if behind schedule, or if the Race Committee considers it is unlikely that the minimum required number of races to constitute a series will be completed.

6.5 The warning signal for each succeeding race will be made as soon as practicable.

6.6 To alert boats that a race or sequence of races will begin soon, the orange starting line flag will be displayed with one sound at least five (5) minutes before a warning signal is made.

6.7 On the practice racing day, a skippers' meeting will be held in the club's event hall at 19:00. From race day 2 and after, a skippers' meeting will be held in the in the club's event hall 2 hours before the 1st warning signal of the day.

7 CLASS FLAG

The class flag for the new rig Tornado will be the Tornado Class insignia on a white background.

8 RACING AREA

SI Addendum A shows the location of the racing area(s)

9 THE COURSES

9.1 The diagram in SI Addendum B shows the course, including the approximate angles between legs, the order in which marks are to be passed, and the side on which each mark is to be left.

9.2 No later than the warning signal, the Race Committee signal vessel will display the approximate compass bearing of the first leg.

9.3 Courses will not be shortened. This changes RRS 32.

9.4 A race shall be abandoned if the wind is continuously below 3 knots for any 15-minute period before the first boat that sails the course finishes. The wind has to be measured at the deck of the RC – boat. This changes RRS 32.

9.5 If a gate mark is missing and has not been replaced by an object displaying the M flag, the remaining mark shall be left to port.

10 MARKS

10.1 Marks are as follows:

Mark	Color Shape	New Mark
1	yellow pyramid inflatable buoy	red pyramid inflatable buoy
1a	yellow cylindrical inflatable pillar	
2p/2s	yellow pyramid inflatable buoys	

Finnish Mark	yellow cylindrical inflatable pillar	
--------------	--------------------------------------	--

10.2 The starting marks will be two race committee starting vessels , one on the starboard side displaying an orange flag and a second one on the port side with a staff displaying an orange flag.

10.3 The finishing marks will be a race committee finishing vessel with a blue flag on the port side and a yellow cylindrical inflatable pillar on the starboard side.

10.4 A Race Committee vessel signaling a change of the next leg of the course is a mark as provided in SI 12.

11 THE START

11.1 Races shall be started according RRS 26

11.2 The starting line is between a staff displaying an orange flag on the Race Committee signal vessel and the course side of the other starting mark.

11.3 [DP] A buoy may be attached to the Race Committee signal vessel anchor line just below daggerboard depth. Boats shall not pass between this buoy and the Race Committee signal vessel at any time. This buoy is part of the Race Committee signal vessel ground tackle.

11.4 [DP] [NP] Boats whose warning signal has not been made shall avoid the starting area. The starting area is defined as a rectangle, 100 meters from the starting line and starting marks in all directions.

11.5 A boat that does not start within ten (10) minutes after her starting signal will be scored Did Not Start (DNS) without a hearing. This changes RRS A4, A5.1 and A5.2.

11.6 No race shall be started if the average wind speed, measured at the deck of the Race Committee starting vessel, is less than 6 knots or more than 25 knots at any time between the warning signal and the starting signal.

12 CHANGE OF THE NEXT LEG OF THE COURSE

12.1 To change the next leg of the course, the race committee will lay a new mark (or move the finishing line) and remove the original mark as soon as practicable. When in a subsequent change a new mark is replaced, it will be replaced by an original mark.
If Mark 1 changes, Mark 1a will not be laid.

12.2 When the direction of the next leg is changed, a green triangle for a change to starboard or a red rectangle for a change to port with repetitive sound signals shall be signaled. This changes RRS

33(a).

12.3 Any action or no action by the Race Committee under this Sailing Instruction will not be grounds for redress under RRS 61.1(a).

12.4 Except at a gate, boats shall pass between the Race Committee vessel signaling the change of course and the nearby mark, leaving the mark to port and the Race Committee vessel to starboard. This changes RRS 28.1.

13 THE FINISH

The finishing line is between a staff displaying a blue flag on the Race Committee finish vessel and the course side of the other finishing mark.

14 [NP] [DP] PENALTY SYSTEM

A boat that has taken a penalty or retired under RRS 44.1 shall complete an acknowledgement form at the race office within the protest time limit.

15 TIME LIMITS AND TARGET TIMES

15.1 The Mark 1 Time Limit, Race Time Limit (see RRS 35), and the Finishing Window are shown in the table below.

Mark 1 Time limit	Race Target time	Race time limit	Finishing Window
20 minutes	60 minutes	90 minutes	30 minutes

15.2 If no boat has passed the first mark within the Mark 1 Time Limit, the race will be abandoned.

15.3 Failure to meet the Target Time will not be grounds for redress. This changes RRS 61.1(a).

16 HEARING REQUESTS

16.1 For incidents observed in the racing area, the protest time limit is 60 minutes after the last boat finishes the last race of the day or the race committee signals no more racing today, whichever is later. That time limit will be posted on the official notice board:

<https://www.racingrulesofsailing.org/documents/10221/event>

16.2 Hearing request forms are available online at:

<https://www.racingrulesofsailing.org/documents/10221/event>

Hearing requests shall be delivered there within the appropriate time limit.

16.3 Notices will be posted starting 30 minutes after the protest time limit was published to inform competitors of hearings in which they are parties or named as witnesses. Hearings will be held in the protest room, located at in the club's event hall, beginning at the time posted.

16.4 A list of boats that have been penalized for breaking RRS 42 under Appendix P will be posted.

16.5 Add new rule 60.4(a)(4): "as far as it alleges a breach of a rule marked with the notation [NP].

16.6 The right of appeal from a protest committee decision is denied as provided in rule 70.3(a).

17 [NP] [SP] SAFETY REGULATIONS

17.1 A sign-out and sign-in system may be organized. The check is carried out on departure and return (including on return to land signaled by an AP/H or N/H flag, in accordance with the following procedures:

17.2 Sign-in will be opened one hour before the scheduled time of the first warning signal of the day and will be closed at the time of the first warning signal.

17.3 Sign-out will be open at the time of arrival of the first competitor of the last race of the day and until the end of the protest time limit posted on that day or one hour after the AP/A, AP/H or N/H flags are displayed on the water.

17.4 In case a boat fails to comply with the requirements of SI 17.1, the following penalties will be applied without a hearing:

1. No Sign-in penalty 10 EURO for children's charity
2. No Sign-out penalty: 10 EURO for children's charity
3. No Sign-in and Sign-out penalty: 20 EURO for children's charity

17.5 [DP] A boat that retires from a race shall notify the Race Committee at the first reasonable opportunity. Furthermore, the boat shall complete a retirement declaration form, which is available online at <https://www.racingrulesofsailing.org/documents/10221/event> within the protest time limit.

In case a boat fails to comply with any of the requirements of SI 17.5, the following penalties will be applied without a hearing: 10 EURO for children's charity

18 REPLACEMENT OF CREW OR EQUIPMENT

18.1 [DP] Substitution of competitors is not allowed without prior written approval of the Race Committee. Requests shall be made using the online system.

18.2 [DP] Substitution of damaged or lost equipment is not allowed unless authorized in writing by the Technical Committee. Requests shall be made at the first reasonable opportunity, which may be after the race using the online system.

19 EQUIPMENT AND MEASUREMENT CHECKS

19.1 A boat or equipment may be inspected at any time for compliance with the class rules, notice of race and sailing instructions.

19.2 [DP] When instructed by a race official on the water, a boat shall proceed to a designated area for inspection.

20 OFFICIAL VESSELS

Official boats are under the authority of the Race Committee and marked as follows:

Race Committee	Jury	Safety	Inspection	Media
<i>Flag "RC"</i>	<i>Flag "J"</i>	<i>Flag "Rescue"</i>	<i>Flag "Measurement"</i>	<i>Flag "MEDIA"</i>

21 [DP] TRASH DISPOSAL

Trash may be placed aboard official or support person vessels.

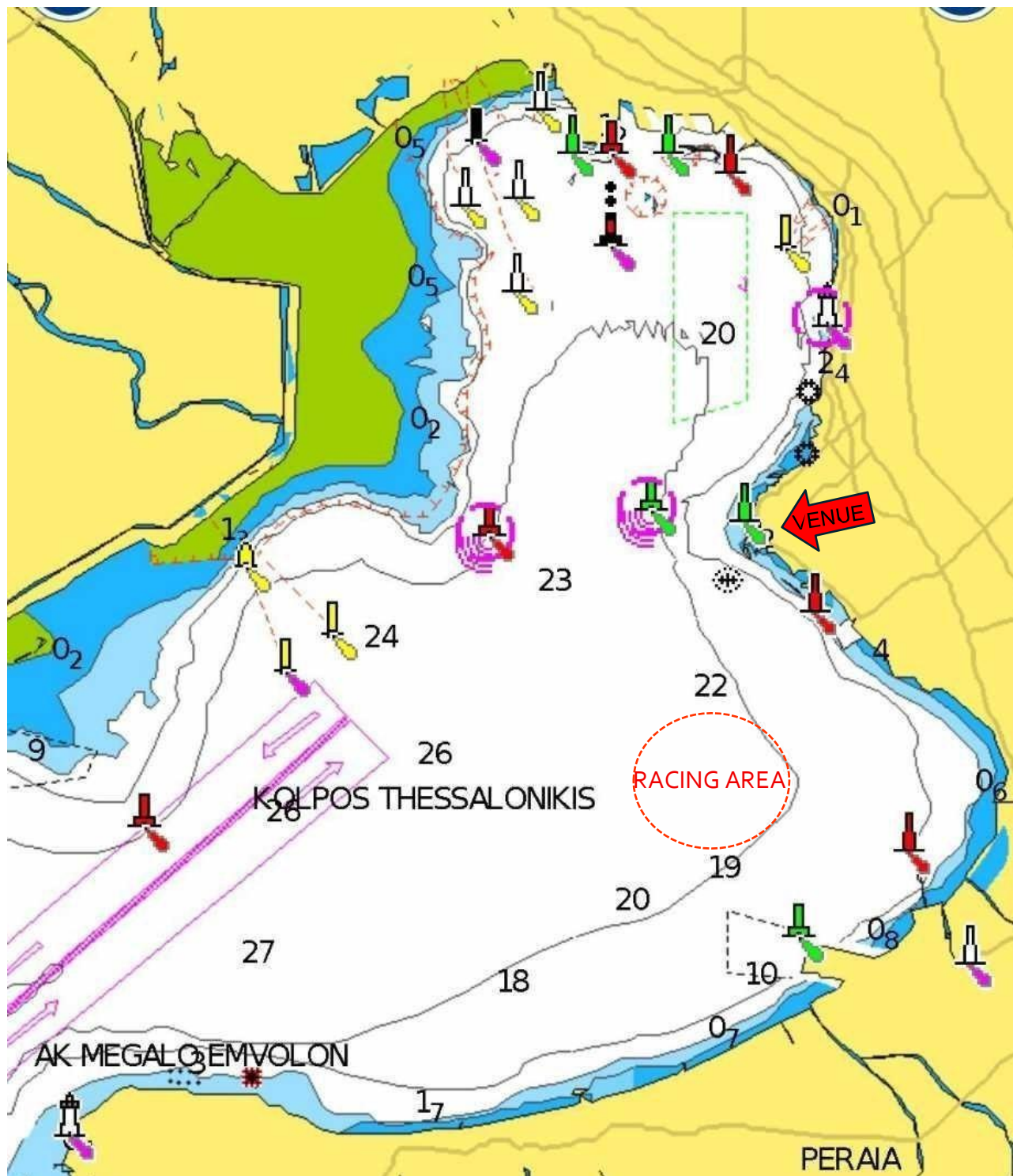
22 [DP] BERTHING

Boats shall be kept in their assigned places in the boat park.

23 PRIZES

Prizes will be given according to the NOR

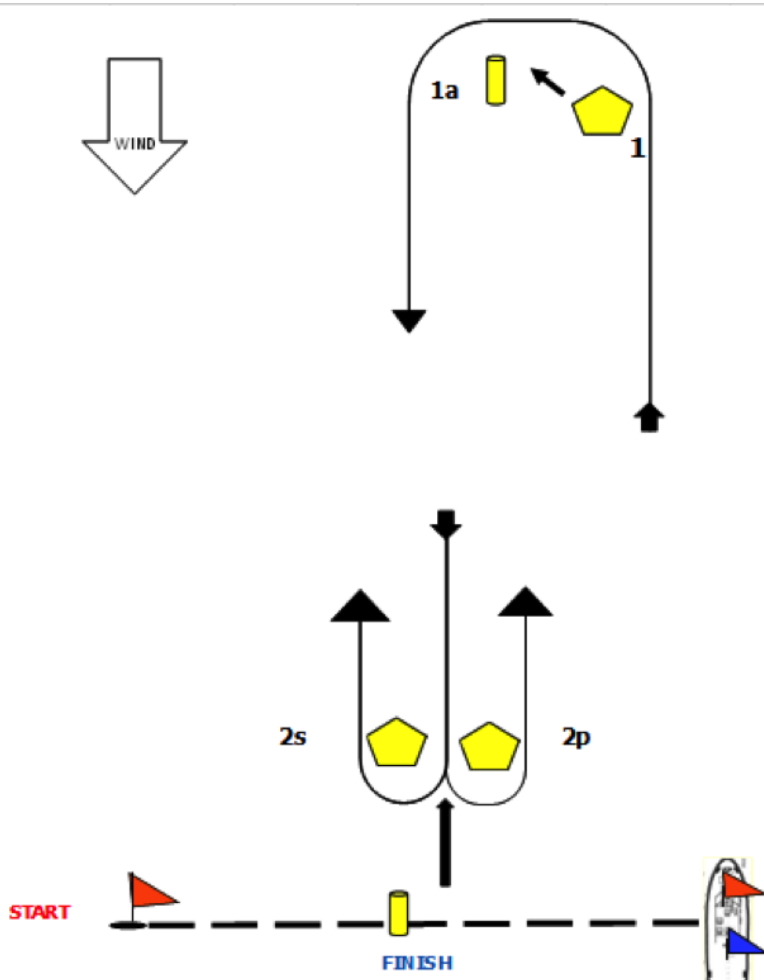
ADDENDUM A – Race Area



ADDENDUM B – CHAMPIONSHIP COURSE

The Course:

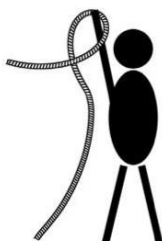
1. Marks 1 & 2, the windward marks, shall be rounded to port.
2. Mark 1a shall be set approximately 100 meters to port of Mark 1. The bearing to Mark 1a from Mark 1 shall be approximately 70 degrees to port of the bearing to Mark 1 from the Start or previous leeward gate.
3. Marks 2s/2p may be disregarded on the first windward leg and on the final downwind leg.
4. Marks 2s and 2p, the leeward marks, shall be set as a gate.
Mark 2s shall be rounded to starboard or
Mark 2p shall be rounded to port.
5. The Course length shall normally be set so the race will last approximately 60 minutes in the anticipated wind conditions. Failure to comply with this paragraph will not be grounds for a request for redress.



COURSE TO BE SAILED

START-1-1a-GATE-1-1a-GATE-1-1a-FINISH

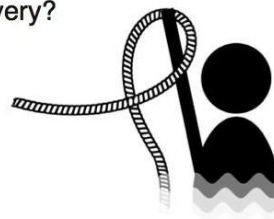
ADDENDUM C - EMERGENCY SIGNAL



I need to be tugged:
put up tow-line or any other line



Thumb up:
I'm good - no help required



Capsize rope up:
I need help!



keep distance:
Go away sign - move open hand away from body



I need help from motorboat:
Move both hands up and down

